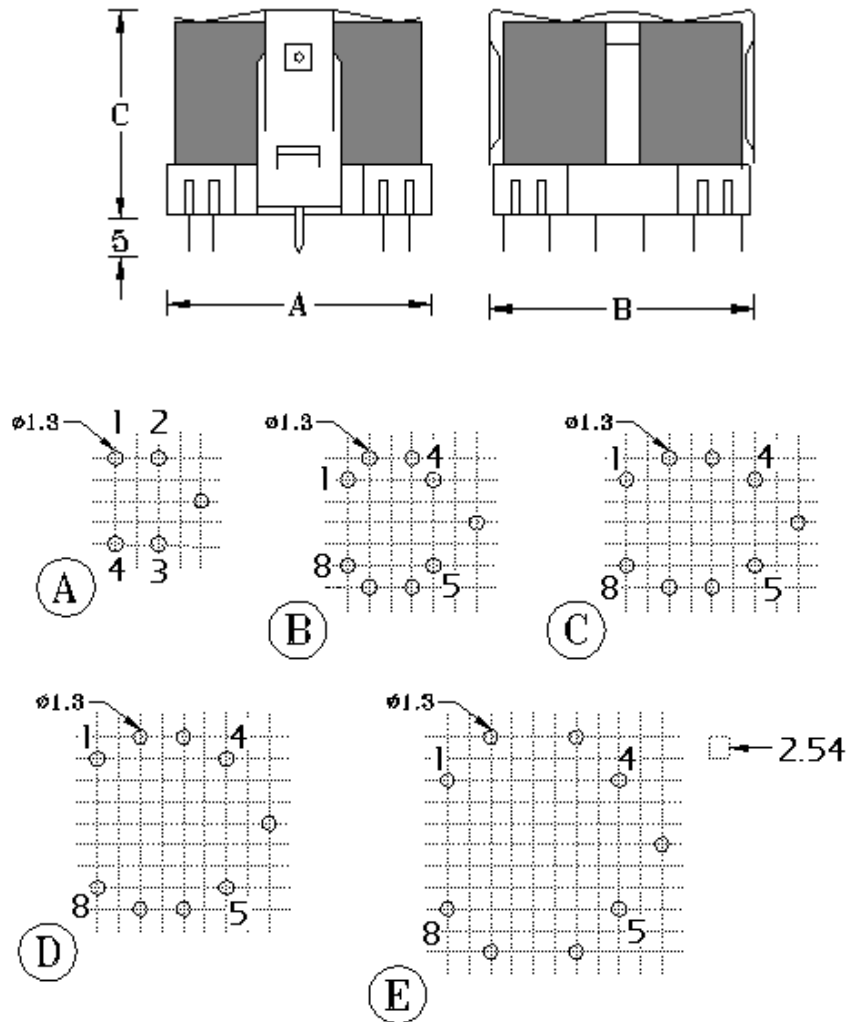


INDUCTORS AND SWITCHING TRANSFORMERS ON POT CORES



ITEM	TYPE	A (mm)	B (mm)	C (mm)	HOLE ARRANGEMENT
710	14x8	15.0	17.0	11.0	A
711	18x11	21.0	20.0	13.5	B
712	18x14	21.0	20.0	17.0	B
713	22x13	26.0	25.0	17.0	C
714	26x16	28.5	28.0	19.0	D
715	30x19	32.5	32.5	23.0	E

Nordelettronica srl

Codice Fiscale, Partita IVA e Registro Imprese TV : n° 04003330265

Sede Legale / Amministrativa / Operativa :

Viale delle Industrie n. 6/a, 31018 Gaiarine (TV) - ITALIA

Tel: +39 0434 759420 - Fax: +39 0434 754620

 ù : www.nordelettronica.it - Š : info@nordelettronica.it