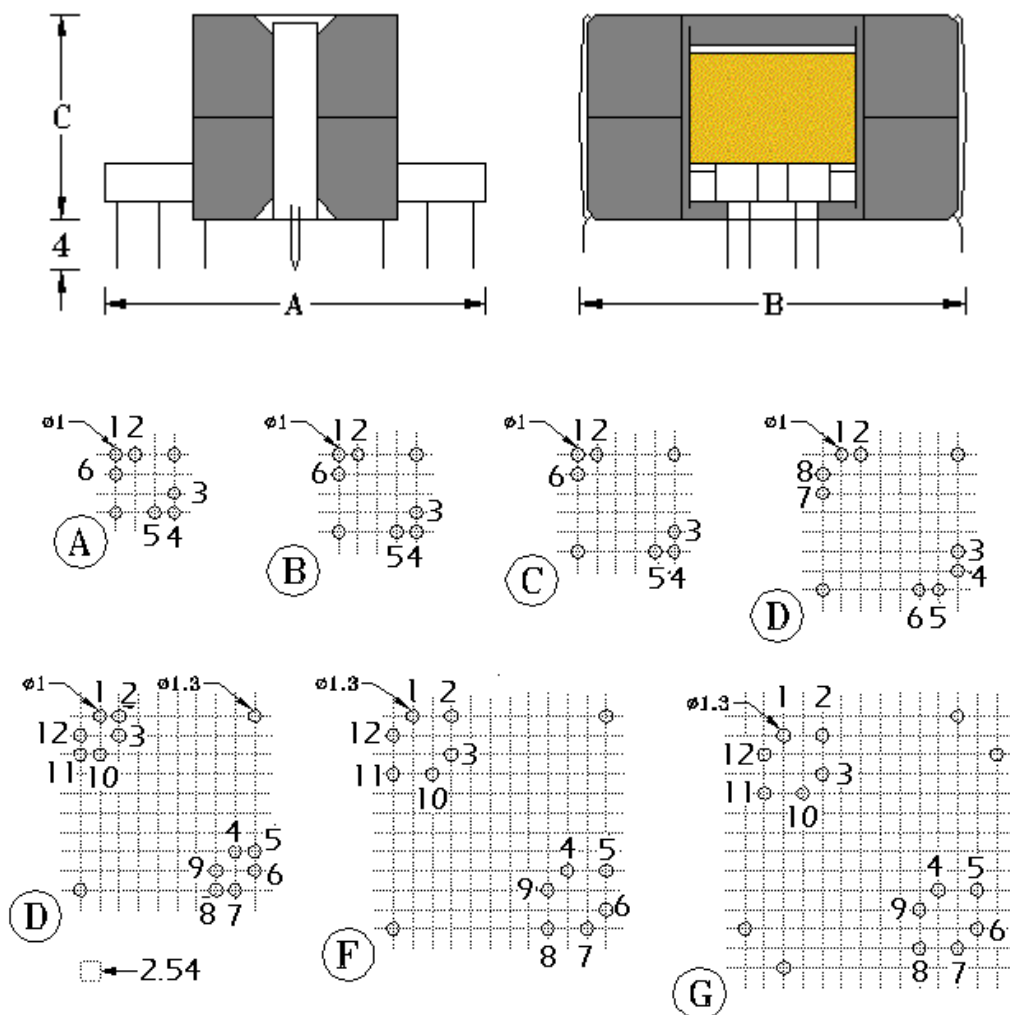


INDUCTORS AND SWITCHING TRANSFORMERS ON RM CORES



ITEM	TYPE	A (mm)	B (mm)	C (mm)	HOLE ARRANGEMENT
690	RM4	12.0	12.5	10.0	A
691	RM5	16.0	16.0	10.0	B
692	RM6	20.0	19.0	12.0	C
693	RM8	25.0	25.0	17.0	D
694	RM10	28.0	30.0	19.0	E
695	RM12	38.0	39.0	24.0	F
696	RM14	41.0	44.0	30.0	G

Nordelettronica srl

Codice Fiscale, Partita IVA e Registro Imprese TV : n° 04003330265

Sede Legale / Amministrativa / Operativa :

Viale delle Industrie n. 6/a, 31018 Gaiarine (TV) - ITALIA

Tel: +39 0434 759420 - Fax: +39 0434 754620

 ù : www.nordelettronica.it - Š : info@nordelettronica.it