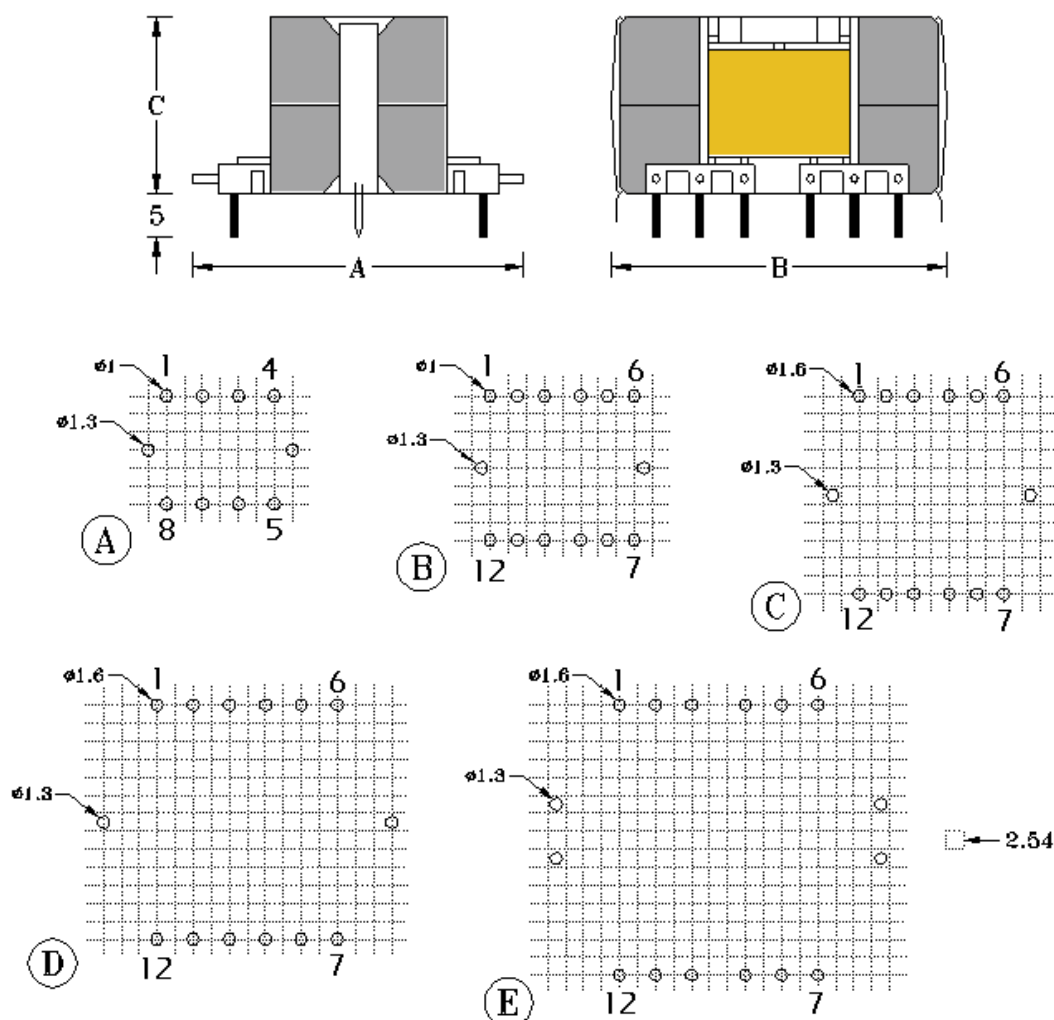


## INDUCTORS AND SWITCHING TRANSFORMERS ON POWER RM CORES



ITEM	TYPE	A (mm)	B (mm)	C (mm)	HOLE ARRANGEMENT
700	<b>RM6</b>	20.0	19.0	12.5	A
701	<b>RM8</b>	30.0	25.0	17.0	B
702	<b>RM10</b>	40.0	31.0	19.0	C
703	<b>RM12</b>	46.0	39.0	24.0	D
704	<b>RM14</b>	51.0	44.0	30.0	E

**Nordelettronica srl**

Codice Fiscale, Partita IVA e Registro Imprese TV : n° 04003330265

Sede Legale / Amministrativa / Operativa :

Viale delle Industrie n. 6/a, 31018 Gaiarine (TV) - ITALIA

Tel: +39 0434 759420 - Fax: +39 0434 754620

 ù : [www.nordelettronica.it](http://www.nordelettronica.it) - Š : [info@nordelettronica.it](mailto:info@nordelettronica.it)